

N8SL Winter Field Day 2021



W8MSC, N8LEK, K8ERS, NU8M

What is Winter Field Day?

- Ham radio outdoors in winter... Like the other Field day, except the last weekend in January.
- WFD was previously established and run by another organization but was not very well publicized or attended.
- It is now run by the Winter Field Day Association (WFDA)
www.winterfieldday.com

Why Should N8SL Participate?

- Practice for club members to organize and deploy portable ham radio activities
- Practice our on the air skills
- Camaraderie
- Build public awareness

Why at Proud Lake Rec Area?

- Traditional summer field day site is closed for the season
- Allows us to evaluate alternate locations for the full summer field day if we lose access to our traditional location at Atchison Park
- We were able to rent a pair of cabins to operate from. This helps with social distancing.

Why the cabins?

- The availability of the two camper cabins at Proud Lake allowed us to reserve them for WFD this year.
- There are two cabins next to each other, allowing for the 500 foot site radius.
- We wished to minimize the setup and teardown of shelters as we have reduced onsite contact of club members



WIXOM RD.

DUC

LAKE

SLEETH RD.

GARDEN RD.

MOSS LAKE

PROUD LAKE

NORTH CH

HARDS RD.

WIXOM RD.

GLENGARY RD.







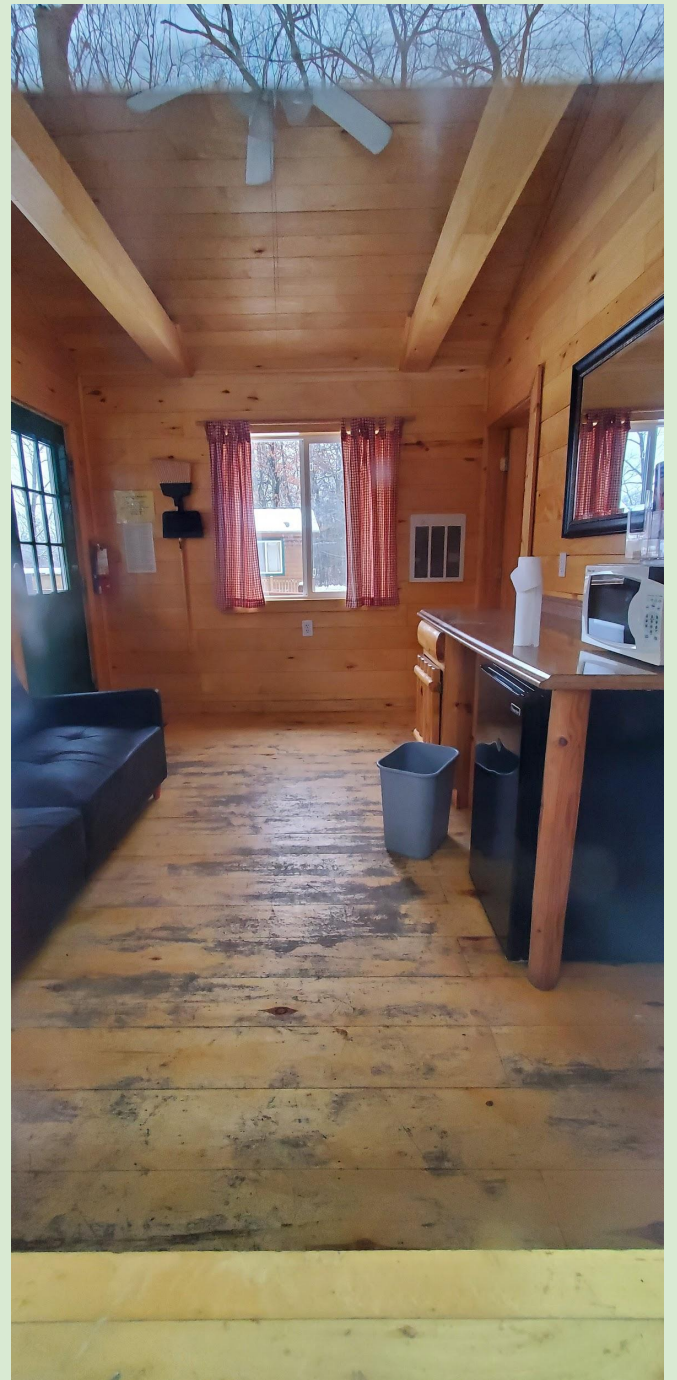
Camper cabins at Proud Lake are equipped with one small front room and two bunk rooms.

Equipped with electricity, heating, and lights

Access is granted by electronic combination locks.

There is a pit toilet available.

There is also a fire pit at each cabin.





- Large deck with plenty of room for chairs and social distancing
- Firepit
 - Bring firewood



The bathrooms (not open) have a covered area in the middle that can be used for a third setup. There is no AC power.

- Could use a long extension cord from the cabins, or use battery.



Differences Between FDs

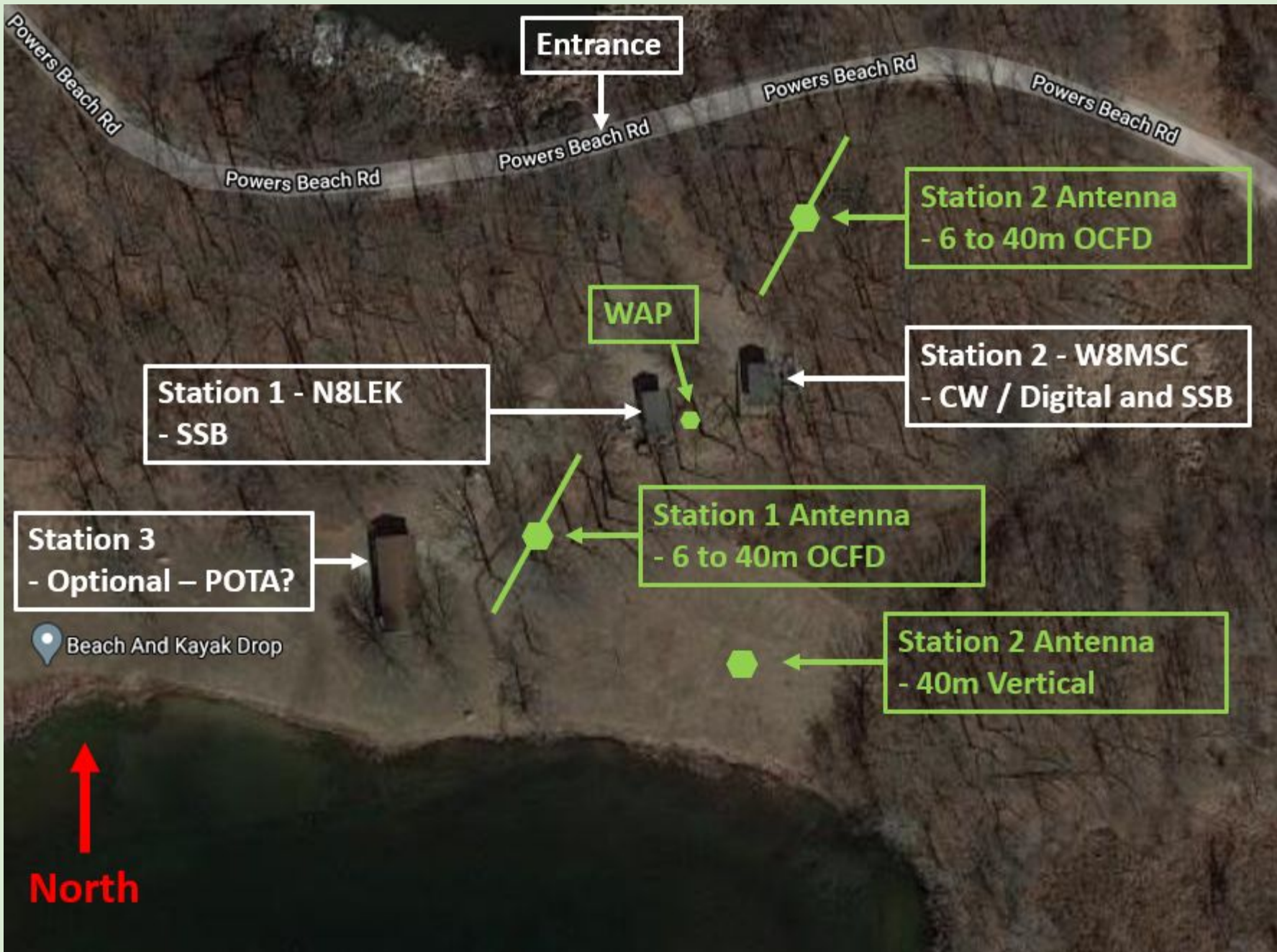
- WFD is NOT affiliated with ARRL
- Proud Lake is a new location for N8SL this year. We operated from a large field for summer field day, but are using cabins for winter.

Similarities between field days

- Both emphasize field-portable operations
- Stations must all be contained within an area of 500 foot radius
- Both run 24 hours, starting at 2pm Saturday
- Both use exchange of class and section
- WFD uses a simplified set of classes:
Outdoor, Indoor, Home



© 2020 Google



Who are the station masters?

- Louis N8LEK, operating from the “Trillium” cabin.
 - Louis is planning to stay overnight Saturday
- Mike W8MSC, operating from the “Ivy” cabin
- A third “floater” station is reserved for the picnic area for a portable station, weather dependent

Club Operators

- Parking is very limited. Each cabin is authorized two parking spaces.
- Overflow parking is available at the picnic grounds parking lot, with a short walk to the cabins (approx 200 yards)
- Please coordinate with N8LEK to schedule time at either station

Public

- No interaction with the general public is expected with COVID and social distancing

N8LEK, Station 1

- Icom IC-7300
- Aerial 51 6-40M OCFD, center support at 12m
- Focus is on SSB
- Will also have a straight key for CW



W8MSC, Station 2

- Icom IC-7300
- K8UT 40m vertical and/or Aerial 51 or SOTAbeams Bandhopper linked dipole on hitch-mounted mast
- Focus on CW
- Also available for digital and phone

WFD Class - Indoor

Operation from inside a remote, insulated, heated (or cooled, depending on your local weather), and weather-protected structure where an Amateur station is normally not available. (Park buildings/cabins, community center, senior center, cottage, etc). An EOC or Club shack may be utilized, providing all equipment used is set up by the contestants.

This will be the class for N8SL this year as we are using the camper cabins.

WFD Class - Outdoor

Operation from a location partly or fully exposed to the elements and at least 30 feet away from your normal station location and not using any part of a previously erected antenna system or ham station. A campground, park pavilion, canopy, picnic table, tent, pop-up camper, or a backyard shed/tent/deck, etc may be used. Operation from a non-insulated car/truck/van/boat (mobile or not) is considered “outdoor”.

N8SL has previously operated this class in previous years.

WFD Class - Home

Operation from inside a home or inside another structure attached to a home that could or would be the usual location of an Amateur station (garage, sunroom, etc), generally using a previously erected antenna system. A “Home” entrant may still be eligible to claim the “alternate power” bonus if not using commercial power. Use of any pre-existing (on site) or permanently installed antenna system or station components renders your station a “Home” station.

Bonus Points

- 1500 if no commercial power is used in powering your WFD station (logging-only computer may use commercial power, but not one used for keying or digital modes)
- 1500 points if the operation is “Outdoors”
- 1500 points if not a “Home” station
- 1500 points for a satellite QSO (maximum one contact credit)

Distributed Participation

- New for 2021 the WFDA is allowing club members to operate from their individual homes and allow their results to be combined with the club call, same as the ARRL Summer Field Day COVID rule modification
- Use their own callsign. Home stations will be 1H MI, for example.
- May claim Outdoor if >30 feet away home QTH with portable gear and outdoor setting

Logging Programs

- N3FJP has a dedicated WFD program. Pros: easy to use, Con: not free, but affordable \$9
<https://www.n3fjp.com/winterfieldday.html>
- N1MM has a WFD user defined contest.
Pros: Free, Con: not installed automatically
<https://n1mmwp.hamdocs.com/manual-supported/contests-setup/setup-udc-contests/#WFD>
FDA2RTTY

Cabrillo Submission for home operators

- The club needs to be specified in the cabrillo file when submitting to the WFD website. The club must be spelled exactly as “South Lyon Area ARC”
- You must email your log file to wfda@winterfieldday.com
- Please email your log to K8ERS as well, so we can review our members’ results and discuss prior to official results being released.

Park Passport - Entry Fee

- Entrance fee is REQUIRED. MI residents get choice to pay for access when registering vehicles at SOS, or pay at the park headquarters.
- The park headquarters is located south of the cabin, about half a mile south on Wixom Road.

COVID

- COVID is still a concern
- Station operators should plan on providing their own headsets, microphones, and keys if possible. The radios in both cabins will be Icom IC7300s
- Each cabin will have hand sanitizer available.

Previous Years

- N8SL has participated in WFD since 2017.
- This will be our fifth year!
- Previously N8SL has operated at Island Lake Rec Area, and used tents and cargo trailers.
- Our results have improved each year.

2017

- Our first year 2 station
 - 105 contacts
 - 46 unique sections
 - 39 unique states, provinces
- 6 operators
- 4+ visitors

2018

- 3 stations
 - 624 contacts

2019

- 2 stations
 - 325 contacts

2020

- 2 Station setup
 - 362 contacts
 - 65 ARRL sections
 - 49 States/ Provinces
- Between 6 different operators
- There were 10 club members and visitors

Resources

www.winterfieldday.com

<https://www.n3fjp.com/winterfieldday.html>

<https://n1mmwp.hamdocs.com/manual-supported/contests-setup/setup-udc-contests/#WFDA2RTTY>

Resources, cont.

K8MRD's video from N8SL 2019 WFD

https://www.youtube.com/watch?v=MM94Wic_k68

[SLAARC Web Page](#)