

Introduction to Arduino Microcontrollers

...and how they can be
used in Amateur Radio

Andrew Rohne, KE8P

February 6, 2013

Modified by Mike Sharpe, W8XH

October 12, 2014

Presentation Outline

- Basics
- Terminology
- Hardware
- Amateur Radio Applications
- Getting Started

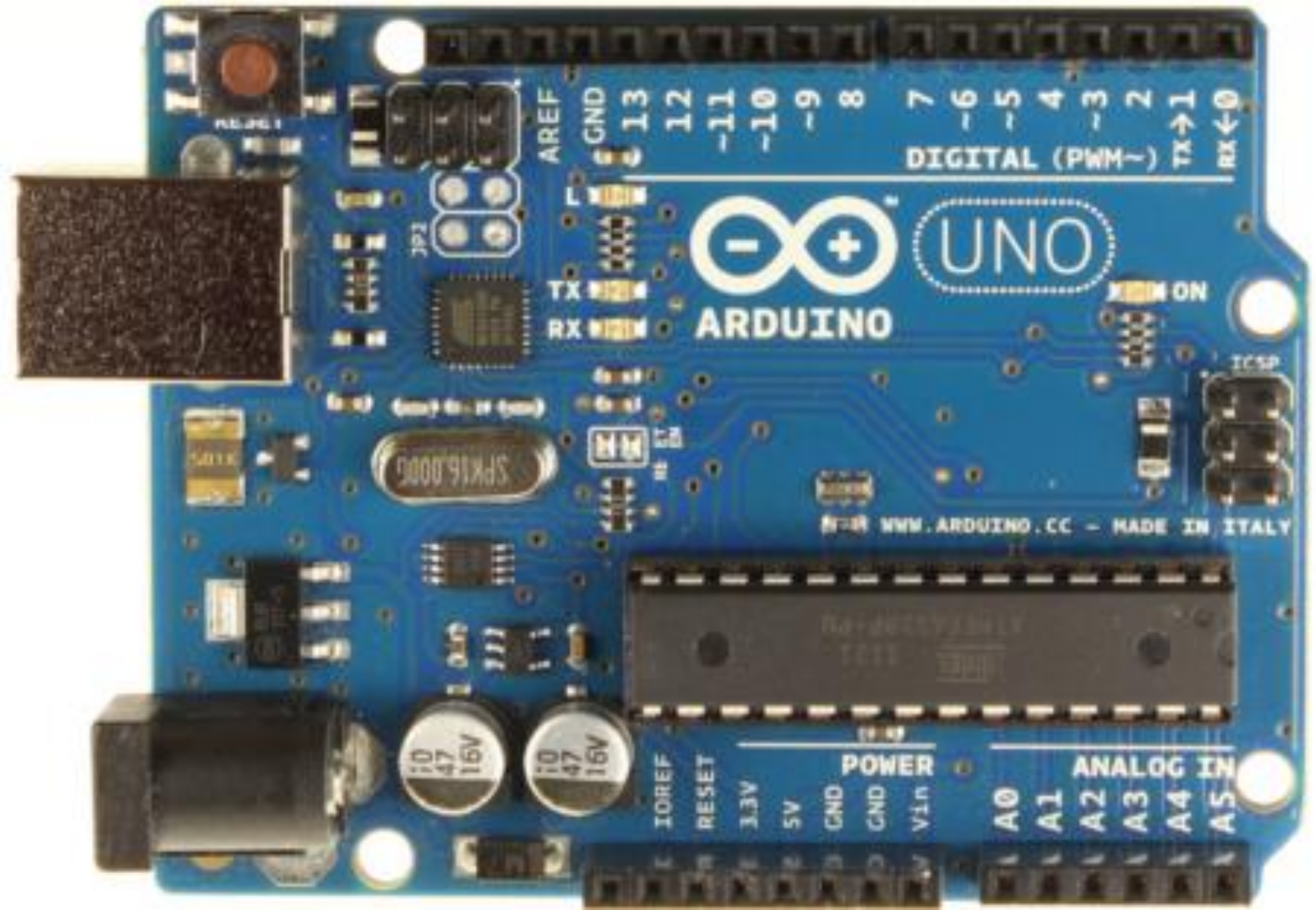
What is a Microprocessor?

- Microprocessor is an IC which has only the CPU inside. These microprocessors don't have RAM, ROM, and other peripheral on the chip.
- A system designer has to add the RAM, ROM, and other peripherals externally to make them functional.
- Application of microprocessor includes Desktop PC's, Laptops, notepads etc.

What is a Microcontroller?

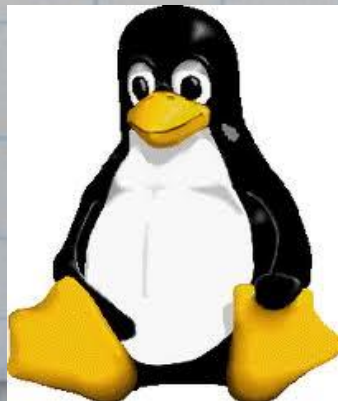
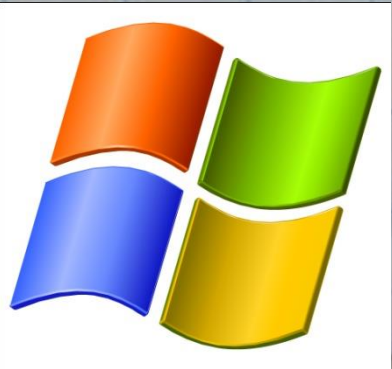
- A Microcontroller has a CPU, in addition with a fixed amount of RAM, ROM and other peripherals all embedded on a single chip.
- Microcontrollers are designed to perform specific tasks where the relationship of input and output is defined

What is it?



Open Source

- Open Source Hardware
- Open Source Bootloader
- Open Source Development Kit
- Community Driven Support



Terminology

- I/O Board - main microcontroller
- Shield - add-on boards
- Sketch - the program
- Sensor - components (thermistors, etc.)
- Modules - serial data (GPS module, etc.)

What do these do?

Digital IO (LEDs, switches)

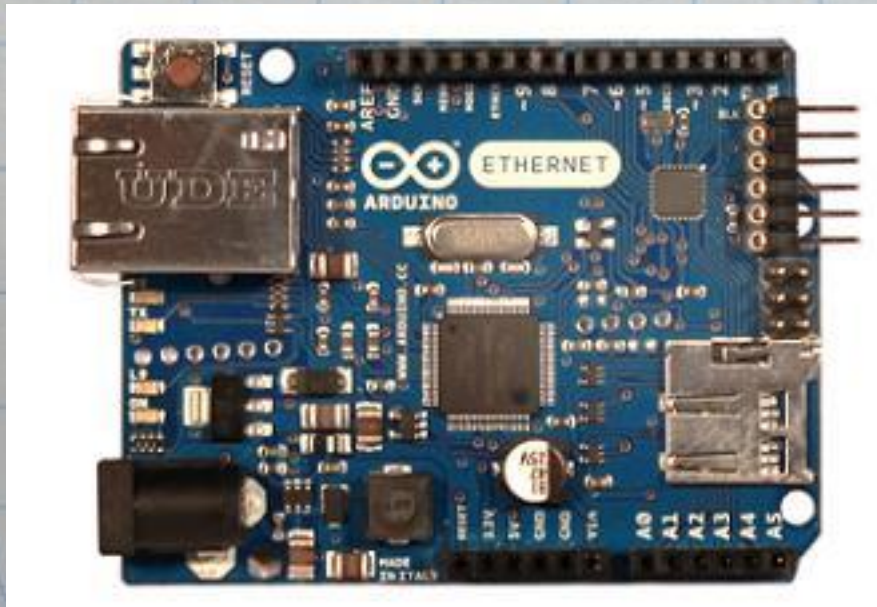
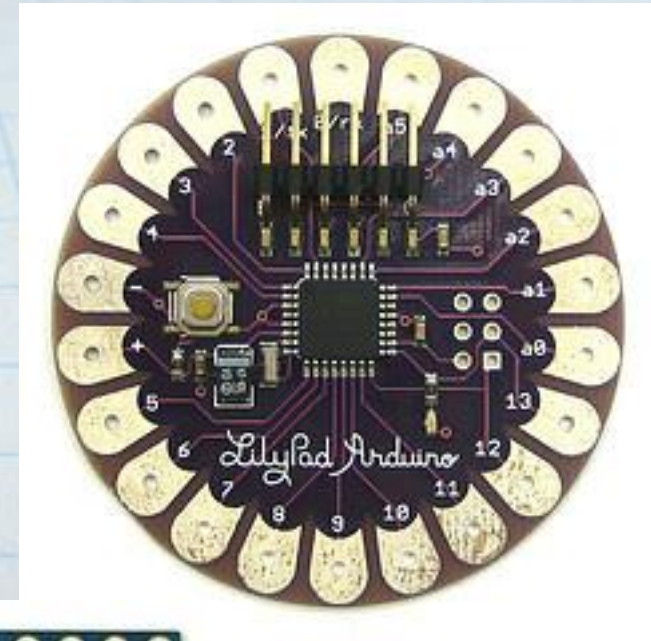
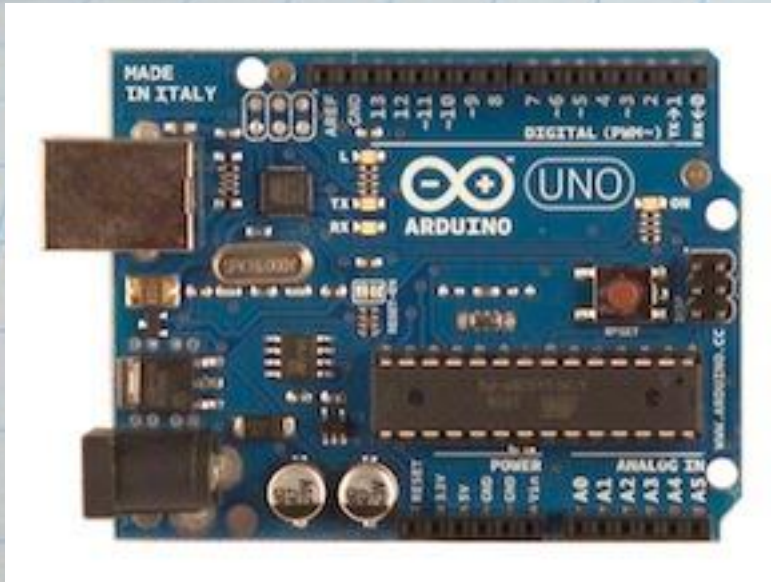
Analog IO (resistive sensor data)

Serial Connection (Sensors, GPS, etc)

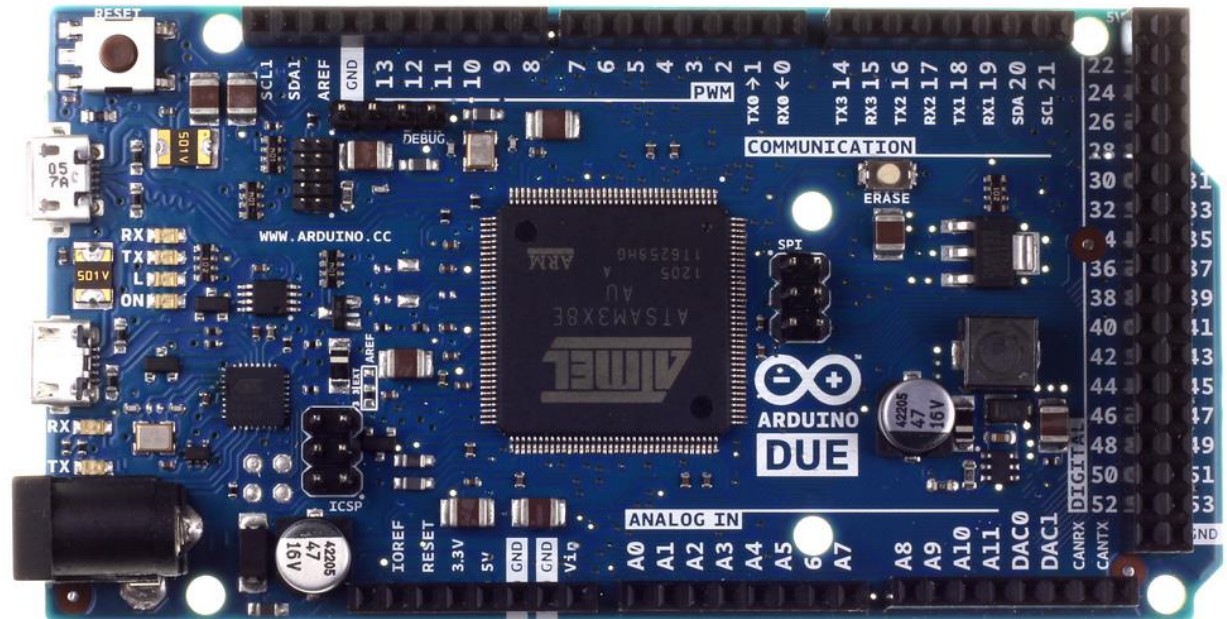
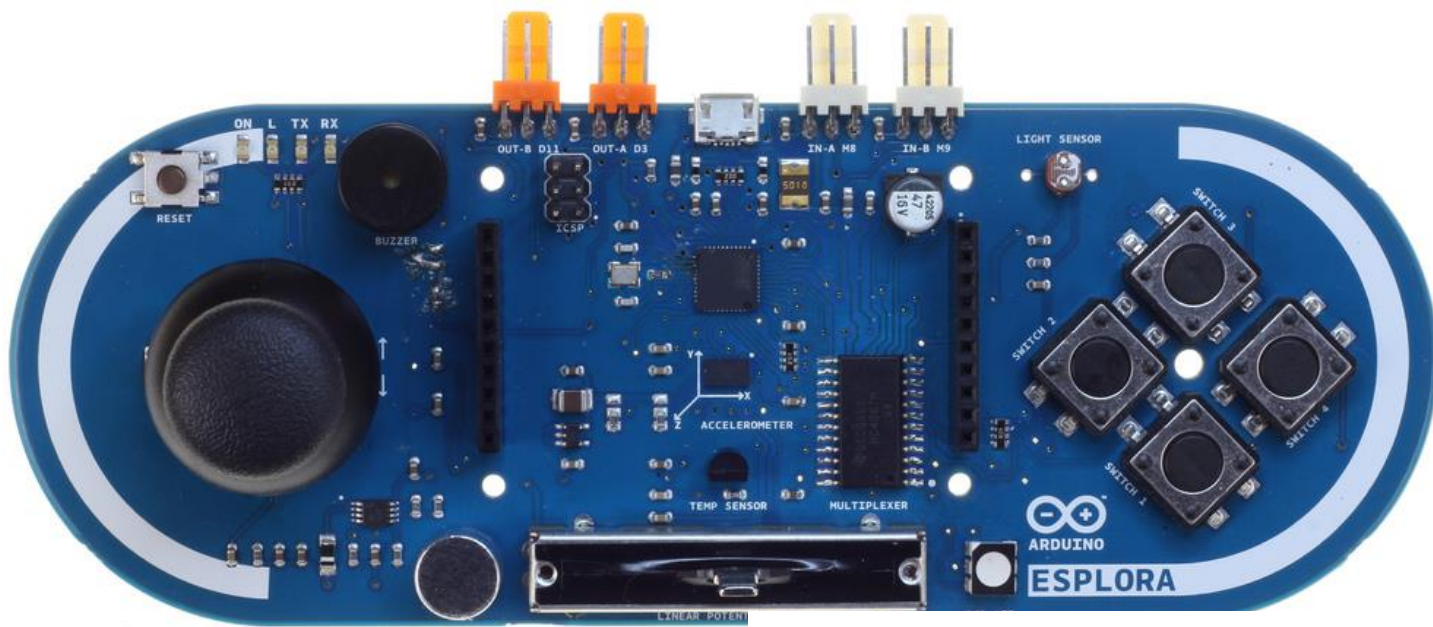
Program from your computer

Your limit is only your creativity!

Arduino I/O Boards



More Boards

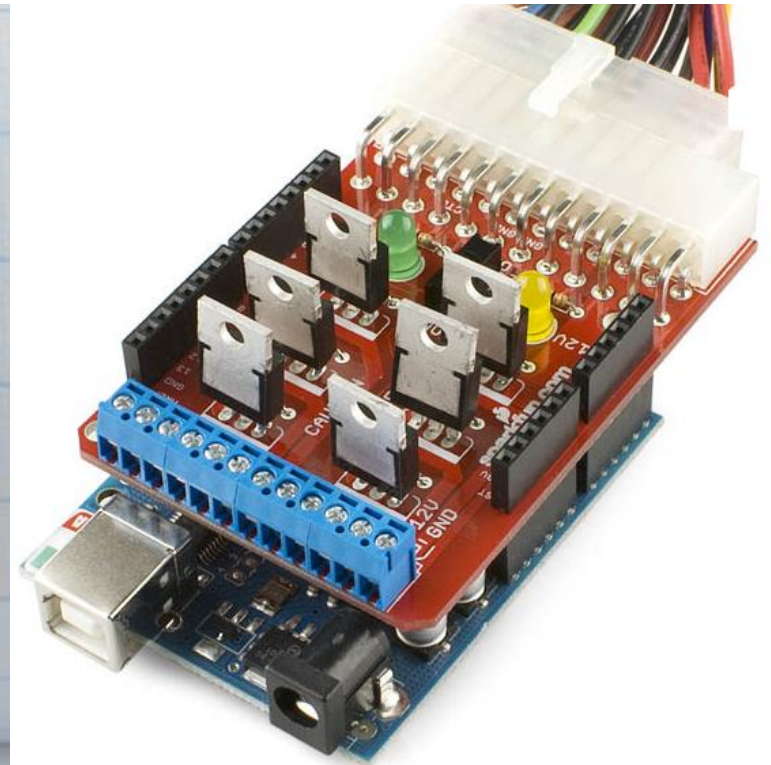
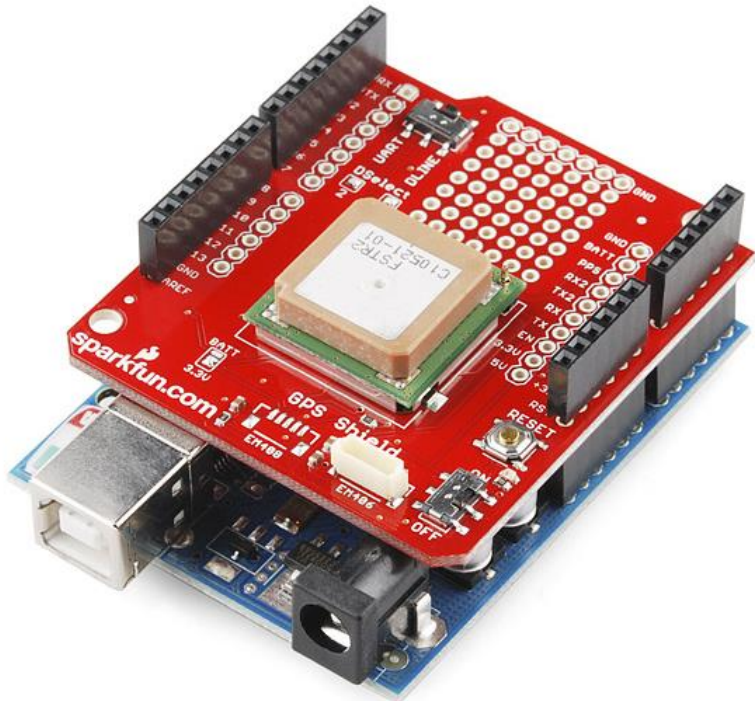
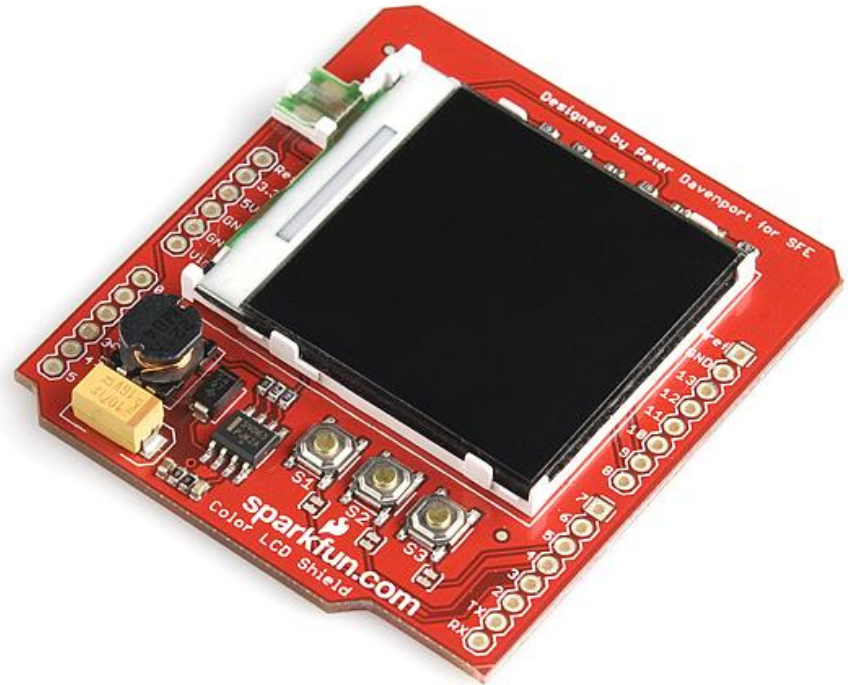
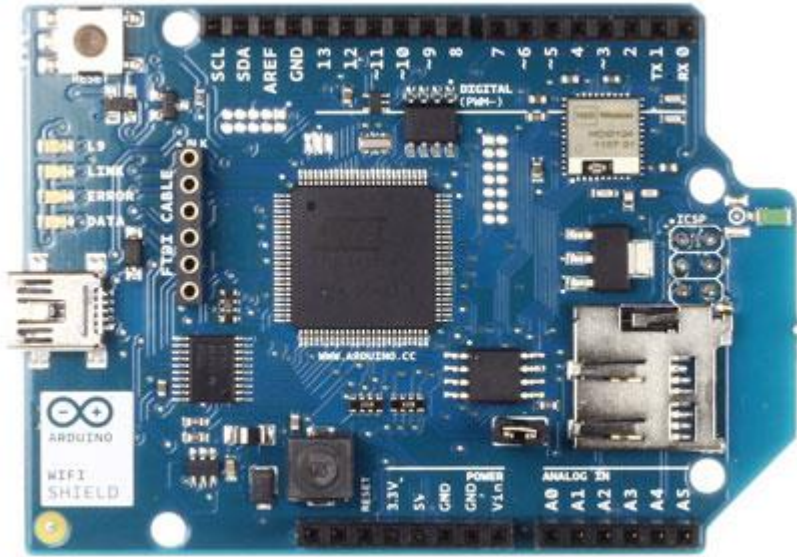


15 current boards

Compatible Boards



Shields



Shields



Touchscreen Shield

Datalogging Shield



Wave Shield



More Shields...



XBee Shield

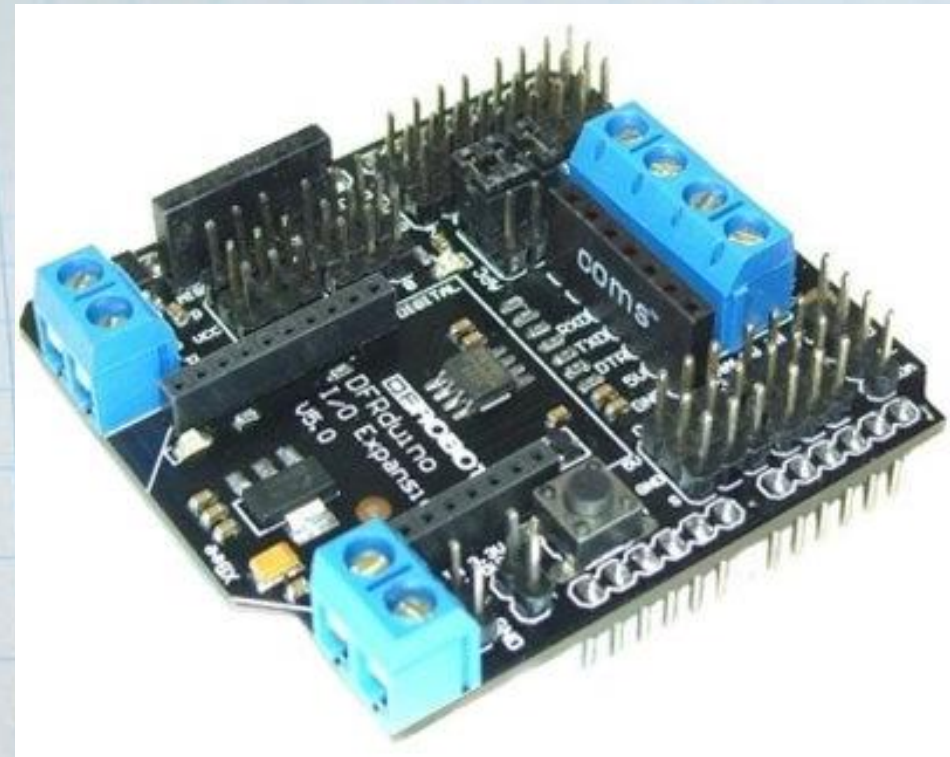
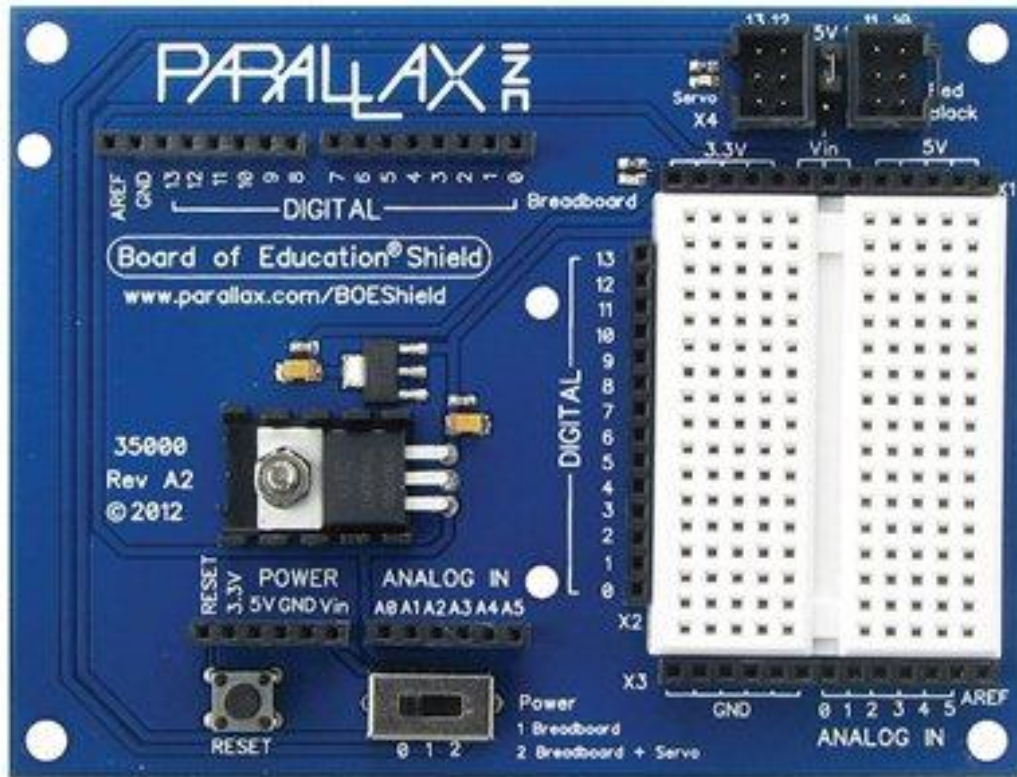


Ethernet Shield

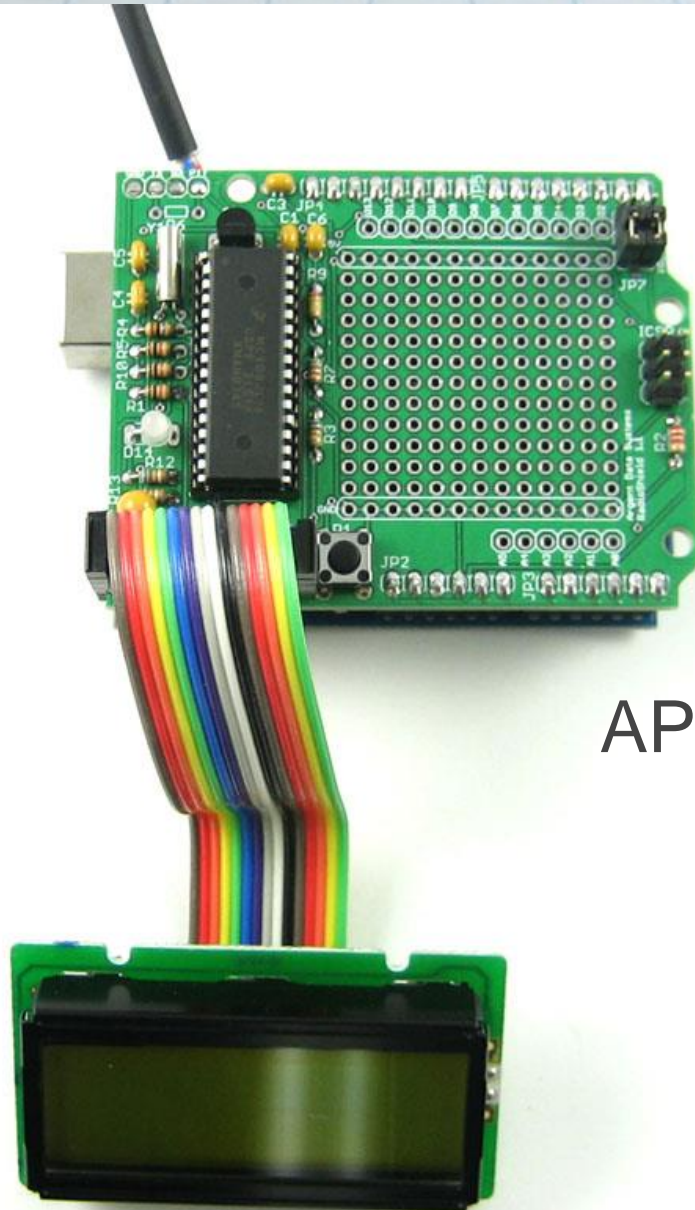


Wifi Shield

And more shields...



Even more shields!



APRS Shield

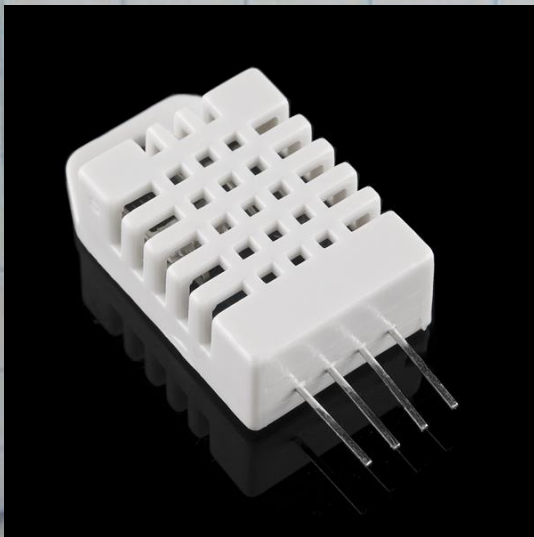
Modules



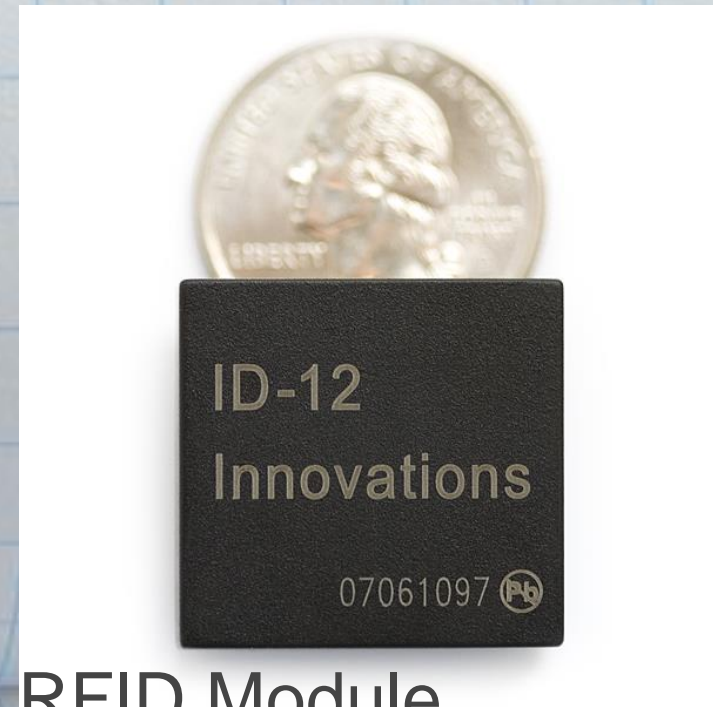
GPS Module



Bluetooth Module



Temperature &
Humidity Sensor



RFID Module

Sensors and Modules



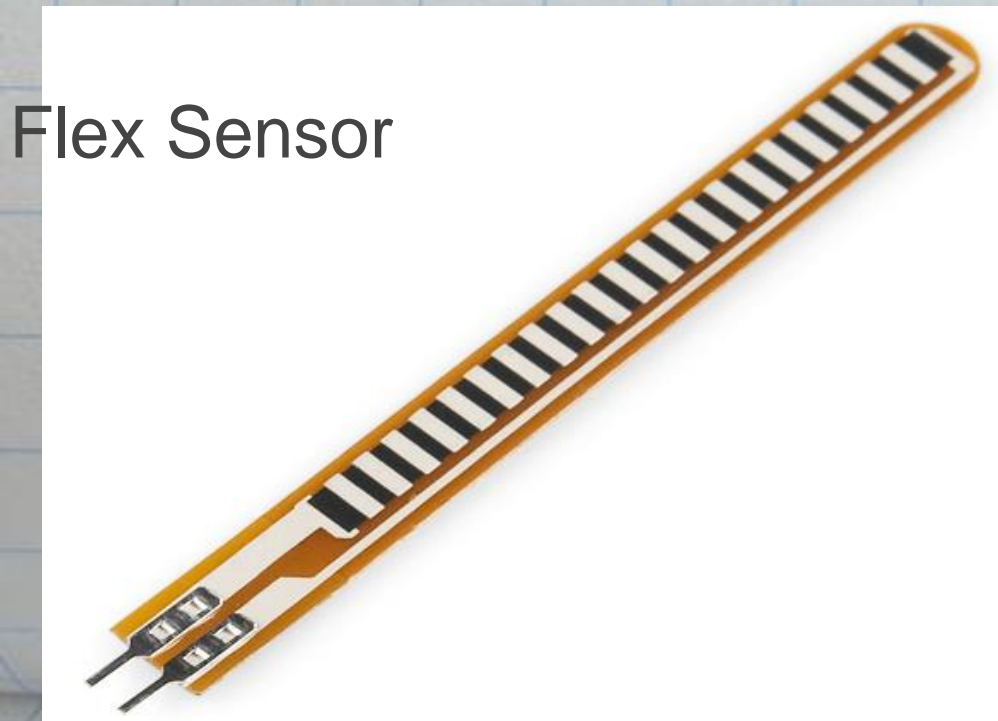
Gas Sensor



Temp & Humidity



Fingerprint Scanner



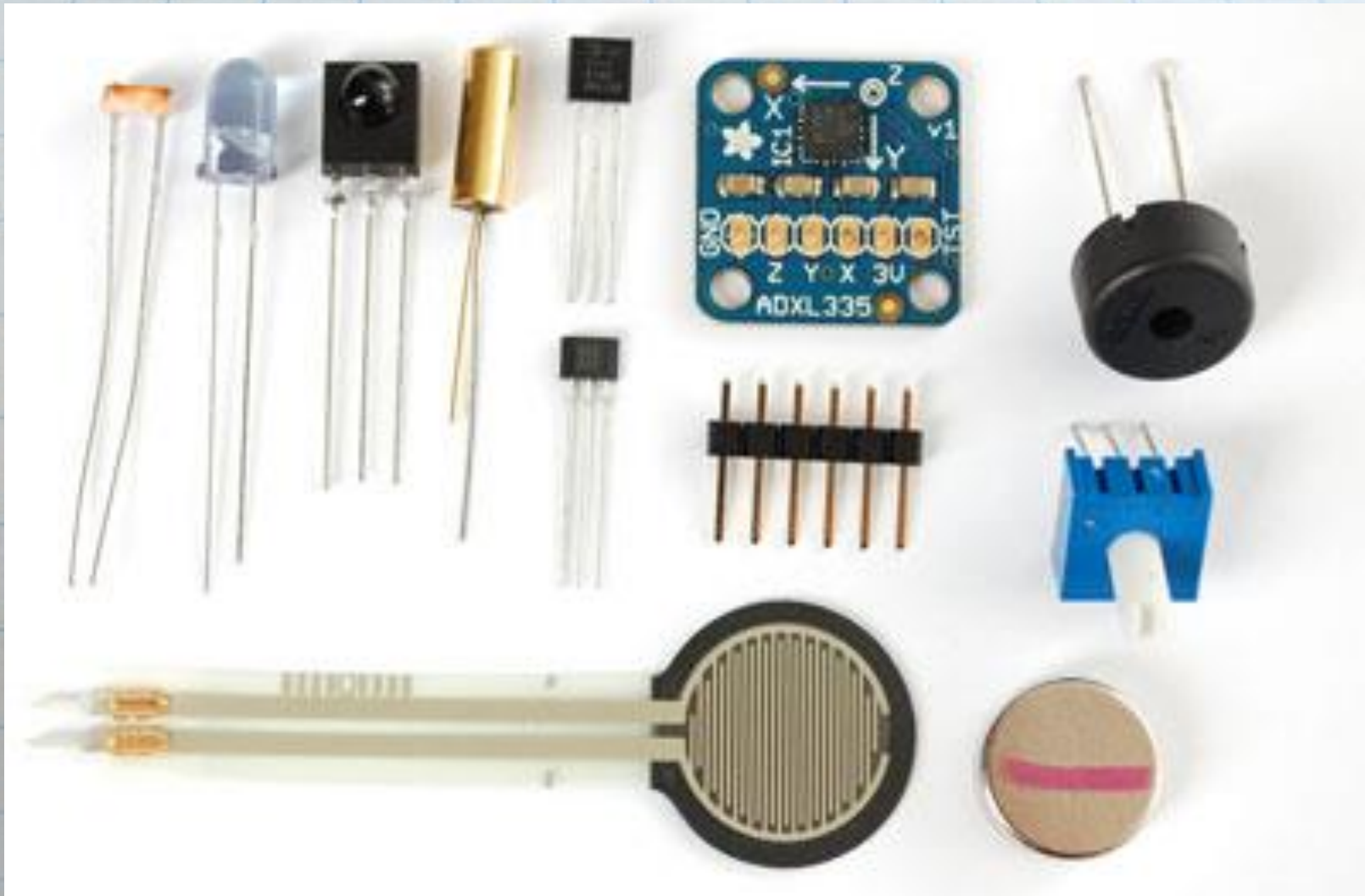
Flex Sensor



Geiger Counter

Sensors

Photoresistor, infrared, force sensitive resistor, Hall effect, Piezo, tilt sensor..



Sketches

```
BluetoothTracker | Arduino 0022
File Edit Sketch Tools Help
BluetoothTracker
/*
Bluetooth Tracker
Written by Andrew Rohne (arohne@oki.org)
www.oki.org
*/

#include <NewSoftSerial.h>
#include <String.h>

NewSoftSerial bt(5,3);
//NewSoftSerial olog(4,5);
String macaddys;
String incomingString=String(100);
char inByte;

void setup(){
  String btreturn;
  Serial.begin(115200);
  bt.begin(115200);
  Serial.print("on\r\n");
  bt.print("\r\nD\r\n");
  while(bt.available()==0){}
  Serial.print(bt.read());
  getInfo();
  //bt.println("$$$");
  //btreturn=bt.read();
  //bt.println("+");
```

Includes

Globals

**void setup()
void loop()**

Amateur Radio Applications

Applications - APRS

Argent Data



Trackduino



Morse Code Keyboard



Arduino Controlled Tuner



Arduino SimpleSat Rotor Controller

<http://amsat-uk.org/info/simplesat-rotor-controller/>

Other Examples

- Weather Stations
- Remote Antenna Switches

Getting Started

Sparkfun Getting Started in Arduino Kit (\$95)

Sparkfun Starter Kit for Arduino (\$60)

Adafruit Experimentation Kit (\$85)

Adafruit Starter Pack (\$65)

OR

Arduino Board (Uno \$20 or Mega \$35) +
Breadboard, wires, components, etc.

